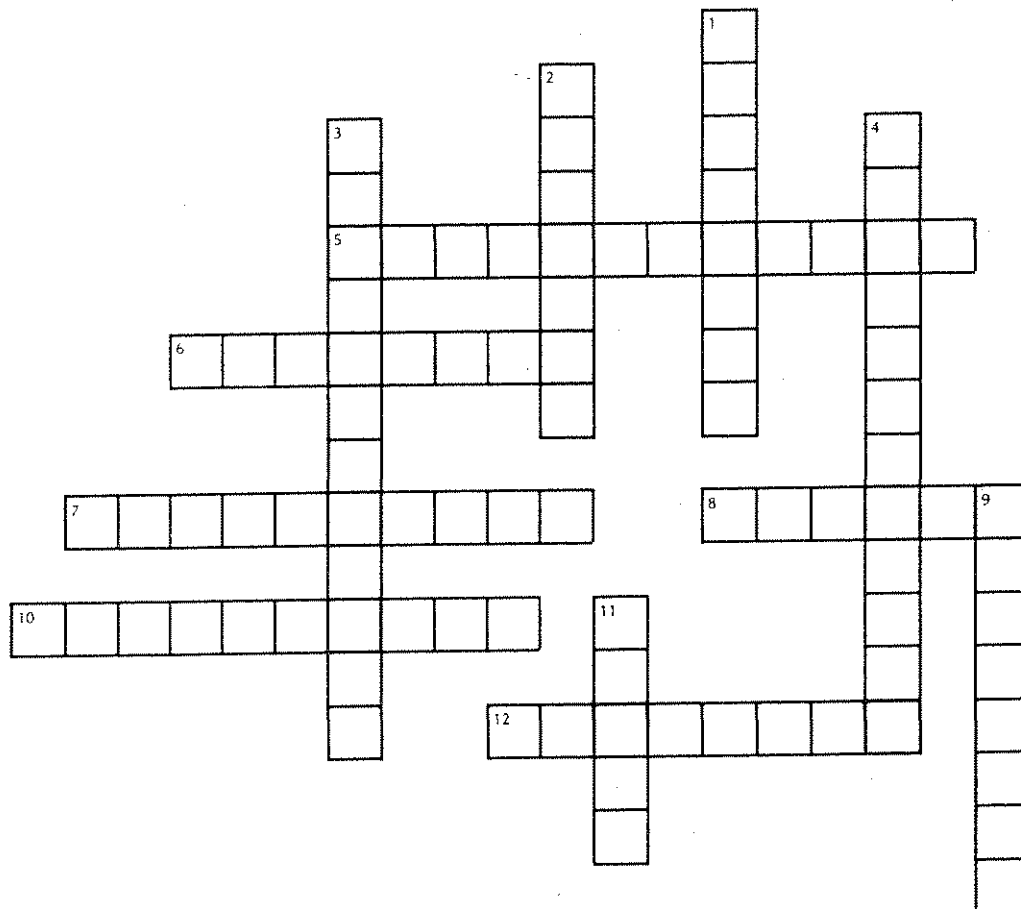


**CLASSIFICATION OF LIVING THINGS****7-2 Major Taxonomic Groups****Part I: Vocabulary Review**

Complete the following crossword puzzle.

**ACROSS**

5. Tool used to identify organisms already classified by taxonomists
6. Phylum to which humans and other mammals belong
7. Plants and certain other organisms that make their own food
8. Kingdom that includes all prokaryotic organisms
10. Phylum to which grasshoppers and other insects belong
12. Phylum to which earthworms belong

**DOWN**

1. Kingdom to which eukaryotic organisms that are mostly unicellular belong
2. Kingdom to which mosses, liverworts, ferns, and seed plants belong
3. Organisms that obtain their food from the environment
4. Phylum to which the hydra belongs
9. Kingdom that includes multicellular eukaryotic organisms that usually can move from place to place on their own during some part of their life cycle
11. Kingdom to which molds, yeasts, mushrooms, rusts, and smuts belong

Table 1 A Dichotomous Key for the Identification of Certain Insects

1a. Insect with wings	2
1b. Insect without wings	7
2a. Wings all fully transparent with wings clearly visible	3
2b. Wings not all fully transparent	10
3a. Hind wings absent	Housefly
3b. Front and hind wings present	4
4a. Hind wings about the same size as front wings	Dragonfly
4b. Hind wings smaller than front wings	5
5a. Two or three long slender tails	Mayfly
5b. No long slender tails	6
6a. Wings at rest held like roof over body	Cicada
6b. Wings at rest not held like roof over body	Bee
7a. Three long slender tails	Silverfish
7b. No long slender tails	8
8a. Head almost as wide as body	Termite
8b. Head much narrower than body	9
9a. Head connected to body by a narrow neck	Louse
9b. Neck not especially narrow	Flea
10a. Wings held against body when at rest	11
10b. Wings not held against body when at rest	Butterfly
11a. Hind legs enlarged for jumping	Grasshopper
11b. Hind legs not enlarged for jumping	12
12a. Front wings partly leathery; tip transparent	Stinkbug
12b. Front wings fully shell-like	Potato Beetle

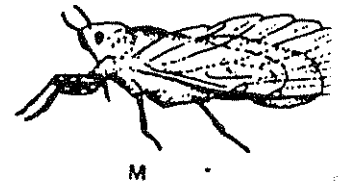
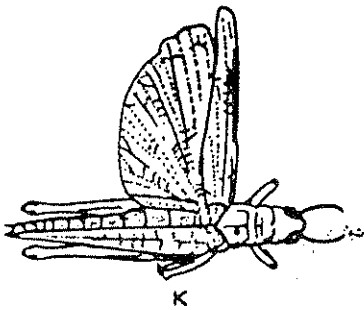
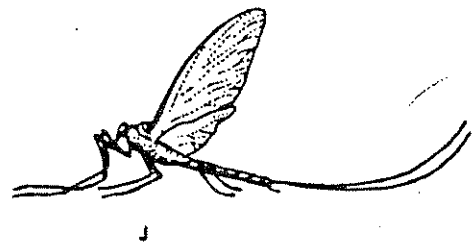
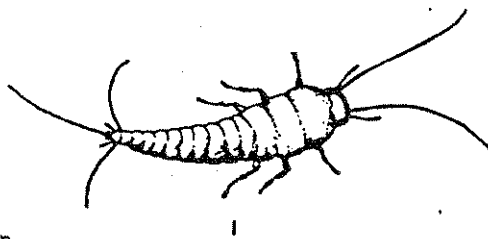
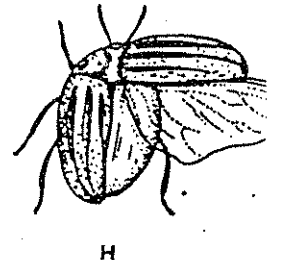
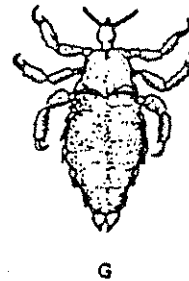
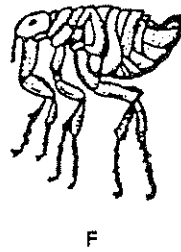
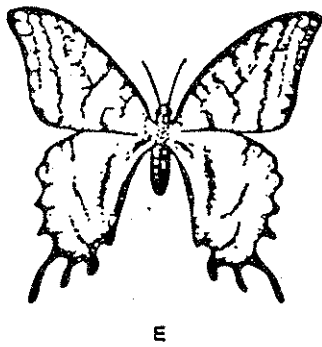
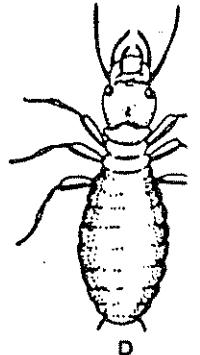
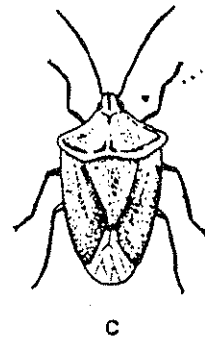
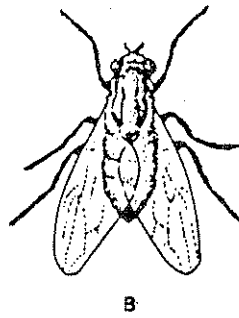
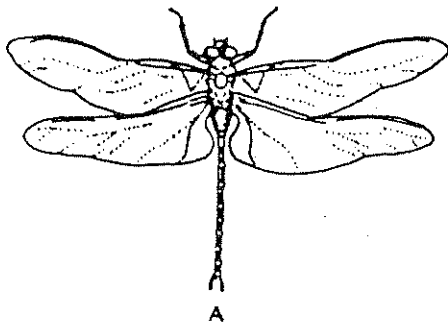


Fig. 1. Selected insects.